



# FOREST SCHOOL

## **Sixth Form Open Evening**

**Monday 30 September 2024**

**5.00pm - 7.30pm**

# Welcome to the **Forest School** Sixth Form Open Evening, where you can learn more about

An overview of the **Sixth Form**

## Welcome Talk

**Ms Spencer Ellis,**  
Head of Sixth Form  
**Year 13 Students**

### *Sports Hall*

Topics will include an overview of life in Forest School Sixth Form, an introduction to the Sixth Form Curriculum and guidance on admission to the Sixth Form: the entrance and scholarship process.

Students and parents are **strongly advised** to start the evening by attending one of the talks before meeting Heads of Department. The talks outline the overall Sixth Form offering at Forest School which provides the context for discussions with Department Heads about the curriculum.

**First talk:**  
**5.15pm - 5.45pm**

**Second talk:**  
**6.15pm - 6.45pm**



# the **Sixth Form Curriculum**, life in the **Sixth Form** and Sixth Form **Scholarships** and **Bursaries**.

In the Sixth Form Centre, you will discover more about the Extended Project Qualification, Admissions, Learning Support, Pastoral Care and the Co-Curriculum, as well as Higher Education Careers Advice and Digital Education.

- Curriculum: Mr M Key, Deputy Head Academic and Mr J Sage, Deputy Head of Sixth Form (Academic Progress)
- Personal Development / Co-curriculum: Mrs E Adshead, Deputy Head of Sixth Form (Personal Development), Mr J Sage, Deputy Head of Sixth Form (Academic Progress and Enrichment)
- Extended Project Qualification: Ms E Newman, Head of Projects and Mr A Thomas, Assistant Head of Projects
- Admissions: Ms D Cleveland-Hurley, Registrar, Sixth Form Scholarships (Academic, Art, Drama, Music, Sport) and Bursaries
- Pastoral: Mrs N Milton, Deputy Head Pastoral
- Higher Education: Ms A Judd, Higher Education Co-ordinator
- Careers: Mrs S Charlton, Director of Futures
- Learning Support Department: Mrs M Wright, Head of Learning Support
- Digital Education and Library: Ms K Garnett, Head Librarian



Our students and **teaching staff** from all departments will be on hand to answer your questions.

### Subject areas

Art, Textiles & Photography  
Biology  
Chemistry  
Classical Civilisation, Latin & Classical Greek  
Computer Science  
Design & Technology  
Drama & Theatre Studies  
Economics & Business  
English Literature  
Extended Project Qualification  
Geography  
Politics  
History  
Mathematics & Further Mathematics  
Modern Foreign Languages  
Music  
Music Technology  
Physical Education  
Physics  
Religious Studies & Philosophy  
Psychology

### Location

Art Department  
Science Block, Lab 4  
Science Block, Lab 5  
Aston Block, A7  
Aston Block, A10  
Design & Techonlogy Department  
Drama Department  
Aston Block, A3  
Aston Block, A6  
Sixth Form Centre  
Aston Block, A13  
Aston Block, A14  
Aston Block, A16  
Aston Block, A15  
Aston Block, A12  
Music Department  
Music Department  
Aston Block, A11  
Science Block, Lab 6  
Aston Block, A7  
Aston Block, A8



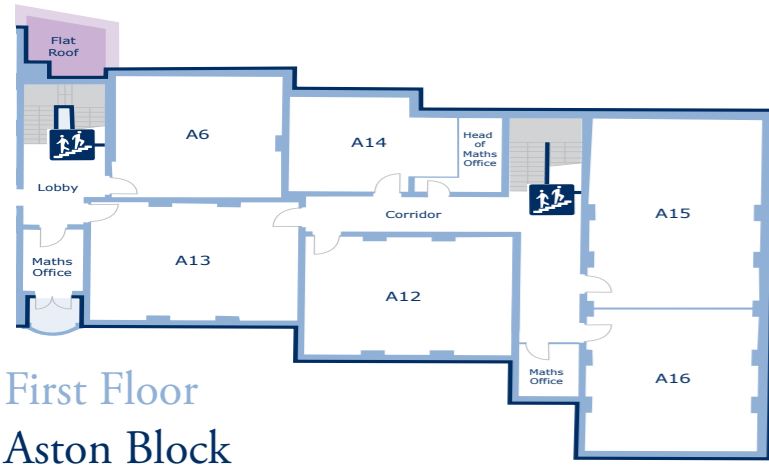
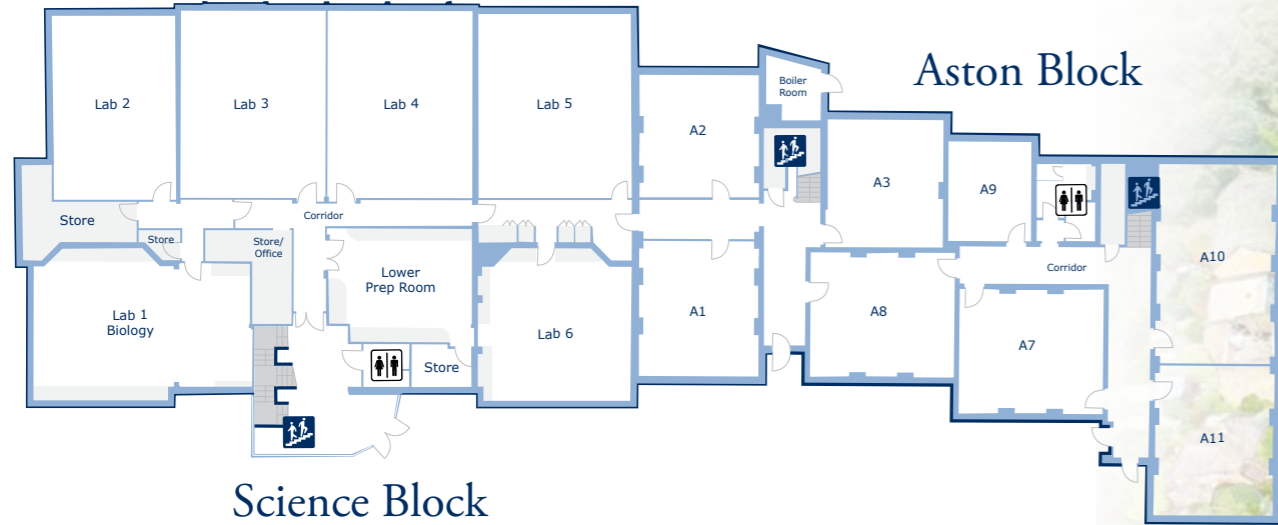
[Click here to download the Sixth Form Prospectus](#)





# Forest School Site Map

## Ground Floor



- 1 Sports Hall
- 2 Music School
- 3 Sixth Form Centre
- 4 Aston Block
- 5 Science Block
- 6 Design & Technology
- 7 Art
- 8 Drama
- R Refreshments
- M Meeting Point - for lost visitors





# FOREST SCHOOL

London E17 3PY

0208 520 1744 | [admissions@forest.org.uk](mailto:admissions@forest.org.uk) | [www.forest.org.uk](http://www.forest.org.uk)